

# SMRCA Roving Roofer

June  
2010



Volume 22  
Issue 2

SMRCA BOARD  
OF  
DIRECTORS

President  
Dan Davis

Royal Roofing Company

Vice President  
Roger LaDuke

LaDuke Roofing &  
Sheet Metal

Treasurer

George Schena

Schena Roofing &  
Sheet Metal Co., Inc.

Secretary

Daniel E. Casey

T. F. Beck Company

Directors

Brian Sylvain

North Roofing Company

Brian Moore

Schreiber Corporation

## Conserving Energy Codes dictate minimum R-values by region

You understand a building's roof assembly serves an important role in improving the building's overall energy efficiency and reducing building owners' heating and cooling costs. However, you may not realize codes mandate minimum thermal insulation requirements for the energy efficiency of most buildings and, in some instances, these minimum R-values may be more than you are accustomed to providing.

### Energy codes

Energy conservation codes usually are adopted by states and apply to all buildings in a state. Most states have adopted one of several editions of the International Energy Conservation Code (IECC), published by the International Code Council (ICC), to serve as the technical basis of their energy codes. In some instances, states modify IECC to address specific regional or local issues.

In several instances, jurisdictions or cities may adopt an energy code that is different from the state-adopted code. For example, Chicago has developed and maintains an energy conservation code that is somewhat different from Illinois' state energy conservation guidelines. However, Chicago's energy conservation code still is loosely based on IECC.

Information about energy code applicability is best verified on a state and jurisdiction basis. ICC has a limited amount of energy code adoption information available on its Web site, [www.iccsafe.org](http://www.iccsafe.org). The Department of Energy's (DOE's) Building Energy Codes Program has useful information on its Web site, [www.energycodes.gov](http://www.energycodes.gov), regarding states' energy code adoptions. And NRCA's Web site, [www.nrca.net](http://www.nrca.net), provides additional information about state and jurisdiction code adoptions.

Because IECC's 2006 or 2009 editions serve as the basis for most energy codes in the U.S., I will focus on these energy codes and their requirements for commercial buildings as defined by IECC.

### IECC

IECC's 2006 and 2009 editions apply to all residential and commercial buildings that are not addressed by the International Residential Code for One- and Two-

family Dwellings (IRC). IRC contains energy-conservation requirements that specifically apply to one- and two-family dwellings.

IECC defines residential buildings as R-3 buildings and R-2 and R-4 buildings that have three or fewer stories above grade. The R designation includes residential occupancies where buildings contain multiple sleeping units. Specific definitions are provided in Section 310—Residential Group R of the International Building Code.

IECC defines commercial buildings as all other buildings that are not included in IECC's definition of "residential buildings" or addressed by IRC.

IECC provides specific requirements for the energy efficiency of commercial buildings in Chapter 5—Commercial Energy Efficiency. Chapter 5 provides two methods of determining buildings' minimum insulation requirements: the use of specific tables within the code or compliance with ASHRAE 90.1, "Energy Standard for Buildings Except Low-Rise Residential Buildings" building envelope provisions. ASHRAE 90.1's 2004 edition applies to IECC 2006, and ASHRAE 90.1's 2007 edition applies to IECC 2009.

IECC and ASHRAE 90.1 base their minimum R-value requirements on the climate and geographic location in which the building being considered is located. For this purpose, the U.S. is divided into eight climate zones. A U.S. climate zone map is shown in [Figure 1](#).

IECC's and ASHRAE 90.1's roofing-related provisions also are based on three roof construction configurations: insulation entirely above deck, metal buildings and attic, and other.

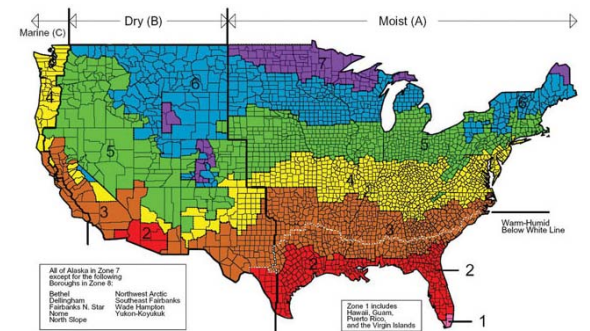


Figure 1: A U.S. climate zone map

Continued on page 2



SOUTHEASTERN MICHIGAN ROOFING CONTRACTORS ASSOCIATION

3560 E. Nine Mile Road, Warren, MI 48091 (586) 759-2140 Fax (586) 759-0528 [www.smrca.org](http://www.smrca.org)

Using IECC's Table 502.2(1)—Building Envelope Requirements—Opaque Assemblies, specific minimum R-values are provided for each climate zone and roof construction configuration.

### ASHRAE 90.1 method

Using ASHRAE 90.1, designers can demonstrate compliance by the prescriptive building envelope method, building envelope trade-off option or energy cost budget method.

Using ASHRAE 90.1's prescriptive method for determining roof assemblies' minimum R-values is largely similar to the process used in IECC; however, the results may not be the same. Once the climate zone in which a building is located is identified, the specific minimum required R-value can be determined using ASHRAE 90.1's Table 5.5—Building Envelope Requirements, taking into consideration the roof construction configuration.

In Climate Zones 1, 2 and 3, ASHRAE 90.1's prescriptive method also allows for reducing a roof assembly's minimum required R-value if the roof assembly's surface has a high albedo (high reflectivity and emittance). The specific minimum thresholds of solar reflectance and thermal emittance allowable for this R-value reduction vary slightly between ASHRAE 90.1's 2004 and 2007 editions and are described in ASHRAE 90.1—04's Exception to 5.5.3.1 and ASHRAE 90.1-07's Section 5.5.3.1.1-High Albedo Roofs.

Using ASHRAE 90.1's building envelope trade-off option and energy cost budget method involves analyzing the whole building being considered. [NRCA](#) considers these approaches to be beyond the expertise (and level of patience) of most roofing professionals. For this reason, [NRCA](#) suggests ASHRAE 90.1's building envelope trade-off option or the energy cost budget method only be performed by building

mechanical engineers or energy management professionals who are experienced using ASHRAE 90.1. In some instances, using these methods may result in lower or higher minimum R-values for roof assemblies than ASHRAE 90.1's prescriptive building envelope method would provide.

somewhat higher than ASHRAE 90.1-04's. Overall, the energy efficiency provided by ASHRAE 90.1-07 is about 30 percent more than that provided by ASHRAE 90.1-04.

Comparing IECC's and ASHRAE 90.1's minimum R-values reveals IECC's values usually are equal to or slightly more than those

Required minimum R-values for insulation above roof decks					
Climate zone	Construction	IECC 2006		IECC 2009	
		Table 502.2(1)	ASHRAE 90.1-04	Table 502.2(1)	ASHRAE 90.1-07
1	Insulation entirely above deck	R-15 ci	R-15 ci	R-15 ci	R-15 ci
2	Insulation entirely above deck	R-15 ci	R-15 ci	R-20 ci	R-20 ci
3	Insulation entirely above deck	R-15 ci	R-15 ci	R-20 ci	R-20 ci
4 except Marine	Insulation entirely above deck	R-15 ci	R-15 ci	R-20 ci	R-20 ci
5 and Marine 4	Insulation entirely above deck	R-20 ci	R-15 ci	R-20 ci	R-20 ci
6	Insulation entirely above deck	R-20 ci	R-15 ci	R-20 ci	R-20 ci
7	Insulation entirely above deck	R-25 ci	R-15 ci	R-25 ci	R-20 ci
8	Insulation entirely above deck	R-25 ci	R-20 ci	R-25 ci	R-20 ci

Note: ci = continuous insulation

Figure 2: Required minimum R-values for roof assemblies with insulation entirely above roof decks

### Comparing values

Minimum R-values for roof assemblies installed with insulation entirely above the deck are provided in [Figure 2](#).

[Figure 3](#) provides ASHRAE 90.1's minimum R-values in Climate Zones 1, 2 and 3, taking into consideration the permitted R-value reduction for roof coverings' high reflectivity and emittance.

Review of Figure 2 reveals IECC 2006's and IECC 2009's minimum R-values are similar for Climate Zone 1 and Climate Zones 5 through 7 for roof assemblies with insulation entirely above deck. However, for Climate Zones 2 through 4, IECC 2009's minimum R-values are somewhat higher than IECC 2006's.

ASHRAE 90.1—04 and ASHRAE 90.1-07 minimum R-values for roof assemblies with insulation entirely above deck are similar for Climate Zones 1 and 8. ASHRAE 90.1-07's values for Climate Zones 2 through 7 are

of either ASHRAE 90.1 edition. Also, in Climate Zones 1 through 3, ASHRAE 90.1 allows for a reduction in minimum-required R-values for reflective roof surfaces. This reduction is not provided for when using IECC's method.

These differences illustrate the importance of designers knowing which energy code and edition applies to the specific building being evaluated.

### Reroofing

IECC's requirements for upgrading existing roof systems to R-values defined by the current energy code are somewhat unclear and subject to interpretation.

Section 101.4.1—Existing Buildings indicates: " ... This code shall not be used to require the removal, alteration or abandonment of, nor prevent the continued use and maintenance of, an existing building or building system ... "

Section 101.4.3—Additions, Alterations, Renovations or Repairs states: " ... Renovations or repairs to an existing building, building system or portion thereof shall conform to the provisions of this code as they relate to new construction without requiring the unaltered portion(s) of the existing building or building system to comply."

Roof assemblies generally are considered to be building systems in the context of the code,

Required minimum R-values for roof systems with high reflectivity and emissivity			
Climate zone	Construction	ASHRAE 90.1-04	ASHRAE 90.1-07
1	Insulation entirely above deck	R-12 ci	R-12 ci
2	Insulation entirely above deck	R-13 ci	R-13 ci
3	Insulation entirely above deck	R-13 ci	R-13 ci
4 through 8	Insulation entirely above deck	NP	NP

Notes: ci = continuous insulation  
NP = not permitted

Figure 3: Required minimum R-values for roof assemblies with insulation entirely above roof decks, taking into consideration the allowable reduction for high roof covering reflectivity and emissivity

which means Section 101.4.1 and Section 101.4.3 can be interpreted to apply to reroofing.

An exception to Section 101.4.3 applies specifically to certain reroofing situations. Exception 4 indicates: "Construction where the existing roof, wall or floor cavity are not exposed" need not comply with the current code provided the building's energy use is not increased.

This can be interpreted to mean it is unnecessary to upgrade a new roof system to the current energy code unless deck replacement is part of a reroofing project. However, another reasonable interpretation is this exception only applies to roof assemblies with below-deck insulation and does not apply to the roof construction configuration with insulation entirely above deck.

Exception 5 in IECC 2009 states: "Reroofing for roofs where neither the sheathing nor the insulation is exposed" need not comply with the current code provided the building's energy use is not increased. This statement appears to address roof re-cover situations. This specific provision does not appear in IECC 2006.

Buildings undergoing a change in occupancy type that results in an increase in demand for energy are clearly required to meet the adopted energy code.

## Being knowledgeable

The energy code provides the minimum R-value requirements for most roof assemblies and may require more insulation.

In some reroofing situations, the need to comply with the energy code is somewhat unclear and subject to interpretation. Such interpretation is best made by the building department for the authority having jurisdiction. In some instances, local modifications to IECC may address and clarify reroofing situations.

I encourage you to be familiar with applicable energy codes.

*Mark S. Graham  
Professional Roofing Magazine  
March 2010*

*Reprinted with permission from NRCA*

## NRCA's April 10 @ 10

If you have questions or comments regarding the issues discussed below, please contact NRCA's Duane Musser at (800) 338-5765 or [dmusser@nrca.net](mailto:dmusser@nrca.net).

### Green Roofing Energy Efficiency Tax Act

The House Ways and Means Committee is gearing up to consider energy-related "green jobs" tax legislation, providing a potential opportunity for the Green Roofing Energy Efficiency Tax Act (H.R. 426). GREETA provides a 20-year depreciation schedule (rather the current 39 years) for commercial roofs that meet a benchmark energy-efficiency standard, thus accelerating demand at a critical time. NRCA is working with GREETA's chief sponsor, Rep. Bill Pascrell (D-N.J.), other House members, and industry and union partners to have a modified version of GREETA included in any "green jobs" tax bill assembled by the Committee. The modified version of GREETA now under consideration would provide building owners with 20-year depreciation for qualifying commercial roofs installed in 2010 and 2011; would apply only to retrofits and not new construction; and would apply to low slope roofs in which insulation is installed entirely above deck and attains R-values considerably higher than existing building codes.

### Health Care Law

After passage of historic and far-reaching health care legislation in late March, the battle over the future of the nation's health care system now shifts to two primary venues – the courts and the federal regulatory process. The new health reform law, and in particular the requirement that all individuals must purchase health insurance (the primary linchpin of the law), is being challenged as unconstitutional in court by over a dozen state attorneys general. The attorneys general argue that the individual mandate fundamentally oversteps the constitutional powers of the federal government and represents an unprecedented expansion of federal power and infringement upon individual liberty and state sovereignty. Also, multiple federal agencies are now beginning the marathon process of implementing the massive new law via the regulatory process, the outcome of which will significantly impact employers. NRCA will continue fighting for the interests of employers as these processes unfold in the coming months and years.

### Construction Industry Exclusion in Health Care Law

NRCA was successful in getting Congress to remove a provision in the health care bill that would have excluded small construction firms from a key small business exemption in the new law. The law exempts employers with fewer than 50 employees from a requirement to provide government-approved benefits to employees or pay a \$2,000 per-employee penalty, but an amendment in the Senate bill reduced this threshold to fewer than 5 employees for construction industry firms only. Construction was

the only industry excluded from the bill's small business exemption. NRCA and a coalition of groups lobbied Congress to have the 5-employee threshold removed in the final health care reconciliation bill approved by Congress. Proponents of the 5-employee threshold indicate they will continue pursuing this policy as stand-alone legislation, and the White House is reportedly supportive of such an effort. NRCA does not expect Congress to seriously pursue the issue further this year, but nevertheless will remain vigilant on this issue.

### OSHA Recordkeeping Rule

On March 31, NRCA and 18 other business associations filed comments raising concerns with OSHA's proposed regulation to require employers to record musculoskeletal disorders (MSDs) in a separate column on OSHA 300 logs. Chief among these concerns is that there is no workable definition for MSDs that will allow employers to identify and record them because the only indication for an MSD is a subjective symptom that the employer will not be able to verify. Thus, OSHA's proposal could result in employers recording injuries that will be inconsistent with OSHA's statutory authority allowing the agency to require employers to record only significant injuries related to the workplace. OSHA's proposal also removes an exemption that allows employers to not record "minor musculoskeletal discomforts" in certain circumstances and thus would result in a tremendous expansion of employer reporting requirements. The comments also point out how OSHA underestimated the costs of this proposal on businesses.

### HIRE Act

Congress approved a final version of the "Hiring Incentives to Restore Employment" (HIRE) Act (H.R. 2847), and the President signed the first "jobs" bill on March 18. The Act provides businesses with an exemption from Social Security payroll taxes for every worker hired (or rehired) in 2010 who has been unemployed for at least 60 days, and also provides a \$1,000 income tax credit for every new employee retained for at least 52 weeks. Finally, the Act extends, through 2010, business expensing provisions that double the amount (to \$250,000) that small businesses can write off for capital investments and purchases of new equipment.

### Small Business and Infrastructure Tax Bill

In late March, the House approved the Small Business and Infrastructure Jobs Tax Act (H.R. 4849), a \$16.8 billion package of tax incentives intended to stimulate job creation. The bill provides \$13.2 billion for Build America Bonds programs used largely by state and local governments for financing of infrastructure development, including school and other institutional buildings. The bill also provides several tax incentives aimed at small businesses, including a temporary 100 percent exclusion of capital gains for qualifying stock, an increase in the deduction for start-up expenditures, and relief from certain IRS penalties. Republicans opposed the bill due to other provisions aimed at offsetting the cost of the bill that increase other taxes and reporting requirements. The outlook for this legislation in the Senate is highly uncertain.

## MiRCA 2010 Convention

The 45th MiRCA Annual Convention will be held at Crystal Mountain, Thompsonville, MI on

**Thursday, July 29, 2010 —  
Sunday, August 1, 2010**

Registration information has been e-mailed.

Deadlines are as follows:

Crystal Mountain Reservation Form  
**Saturday, June 30, 2010**

MiRCA Registration Form  
**Friday, July 2, 2010**

MiRCA Event Sponsorship  
**Friday, July 2, 2010**

“Blocked” Tee Time Reservations  
**Friday, July 16, 2010**

Send in your registration forms today!

## Retirements

Congratulations on the retirement of:

Terry Mudge, J.D. Candler Roofing Co., Inc.

Jim Obie, Schreiber Corporation

Chuck Rosa, Schreiber Corporation



## Deepest Sympathy

Our deepest sympathy's are extended to family and friends of:

Clarence Pomaville, father of Rob Pomaville, Dave Pomaville & Sons, Inc.

Larry Rowe Sr, National Ladder & Scaffold Company.

Charlie Stevens, Trumbull Asphalt & Owens Corning.



## Birthday Wishes

**Mark Stasa**

*Kerr, Russell & Weber, PLC*

May 7



**Jody Smith**

*Bradco Supply Corporation*

May 15

**Bob Bair**

*ALCO Products, LLC*

June 11

**Teresa Sutton**

*DRIS*

June 17

**Judd Crane**

*Crane Roofing, Inc.*

June 20

**Lisa Yontz**

*Bradco Supply Corporation*

July 13

**Mike Mass**

*Derbigum*

July 23

**Marie Schena**

*Schena Roofing & Sheet Metal Co., Inc.*

July 31

**Ed Karpinski**

*ALCO Products, LLC*

August 8

## Anniversary Wishes



**Heather & Chris Hadley**

*SMRCA*

June 29

**Terry & Wally Kiciak**

*TK Roofing Products and Marketing*

August 14



## Newly Elected RIFP Trustees And SMRCA Board of Directors

The election of the RIFP Trustees and SMRCA Board of Directors for the 2009—2010 terms were held. The election results are as follows:



### RIFP Trustees

President	<b>Dan Casey</b> T.F. Beck Company
Vice-President	<b>Roger LaDuke</b> LaDuke Roofing & Sheet Metal
Treasurer	<b>Brian Sylvain</b> North Roofing Company
Secretary	<b>Brian Moore</b> Schreiber Corporation

### SMRCA Board of Directors

President	<b>Dan Davis</b> Royal Roofing Company
Vice-President	<b>Roger LaDuke</b> LaDuke Roofing & Sheet Metal
Treasurer	<b>George Schena</b> Schena Roofing & Sheet Metal
Secretary	<b>Dan Casey</b> T.F. Beck Company
Director	<b>Brian Sylvain</b> North Roofing Company
Director	<b>Brian Moore</b> Schreiber Corporation

Congratulations and thank you for volunteering your time to help administer the Association.

## Lost and Found

Golf club head cover found at the SMRCA Golf Outing. If you lost this, contact the SMRCA Office at 586-759-2140.



## 2010 SMRCA Golf Outing

The SMRCA Annual Golf Outing was held on Tuesday, May 18, 2010 at Twin lakes Golf Club located in Oakland, MI. Upon completion of golf, everyone gathered for cocktails, hors d'oeuvres, dinner and prize distribution.

RCI—Great Lakes Chapter sponsored the Putting Competition and the winner was Gary Sova with a Hole-In-One.

Special thanks are extended to Roger LaDuke, LaDuke Roofing & Sheet Metal; Stacy Foley, Crane Roofing, Inc; Mickey Marshall, North Coast Commercial Roofing Systems, Inc.; Sue Baumberger, Johns Manville and Savannah Hadley, SMRCA.

Thank you to all the prize contributors and sponsors that made the SMRCA Golf Outing a huge success!

- ALCO-NVC, Inc.
- Atlas EPS
- BeneSys, Inc.
- Benson's Building Supply
- Bradco Supply Corporation
- Division 7 Roofing Solutions, Inc.
- Durapac LLC
- Environmental Industrial Services, Inc.
- Firestone Building Products
- Firestone Unaclad Metal
- GAF Materials Corporation
- Georgia-Pacific Densdeck
- Hy-Tech Products, Inc.
- Johns Manville
- MWA, Inc.
- M.W. Morss Roofing, Inc.
- National Ladder & Scaffold Company
- National Roofing & Sheet Metal Co., Inc.
- North Coast Commercial Roofing Systems, Inc.
- North Roofing Company
- Oakland Metal Sales, Inc.
- L.T. Ollesheimer & Son, Inc.
- RCI
- R.K. Hydro-Vac, Inc.
- Roofers Union Local #149
- Roofing Industry Promotion Fund
- Roofing Products of Michigan, Inc.
- Schreiber Corporation
- SMRCA
- Soprema
- Sullivan, Ward, Asher & Patton, P.C.
- ULLICO
- USG-Securock
- Valenti Trobec Chandler, Inc.
- Wimsatt Building Materials, Inc.



## 2010 Roofers Union Local #149/ Roofing Industry Promotion Fund Scholarship Winners

The Governors for the Scholarship Grant Committee will award four Scholarship Grants to college bound students at a June 2010 meeting to be held at the Roofers Union Local #149 office in Detroit, MI. Commercial Roofing Contractors of Southeastern Michigan, through the Southeastern Michigan Roofing Contractors Association (SMRCA), along with the Roofers Union Local #149 annually award college scholarships to dependents of employees of member roofing contractors.

This year's winners are:

**Shelby Gilliam**—Taylor, MI  
(Schreiber Corporation)

**Monique Horon**—Emmett, MI  
(Lutz Roofing Company, Inc.)

**Robert Stewart**—Royal Oak, MI  
(Schreiber Corporation)

**David Pomaville**—Sterling Heights, MI  
(Dave Pomaville & Sons, Inc.)

Applicants were asked to submit an essay describing, "How Important is the Roofing Industry?" to the Joint Union/Contractor Scholarship Committee. Winners will receive Scholarships in the amount of \$1000.00 contributed by the SMRCA, Roofers Union Local #149 and the Contractor Employer.

Initiated over 20 years ago, this program is an example of the SMRCA/Roofers Union Local #149 and SMRCA Member Contractors working to promote continued education and to encourage industry dependents to attend college.

## Industry Schedule of Events

**June 20-23**  
Western Roofing Expo 2010  
Las Vegas, NV  
[www.wrsca.com](http://www.wrsca.com)



## Michigan's New Smoking Rules

Effective May 1, 2010, smoking in public places in Michigan (which will include your places of operation) will be legally prohibited.

Here is a summary of what this means to you:

- Smoking is now banned in your places of operation (consisting of your offices, plants, warehouses and other facilities). Smoking inside, what the law refers to as “enclosed indoor areas” in “public places”, is prohibited. This ban applies to everyone – employees and visitors alike. All forms of tobacco smoking are prohibited.
- You must also put up “No Smoking” signs or symbols inside your building and the non-smoking signs or symbols must be clear and conspicuous. You should feel free however, to make sure that the non-smoking signs or symbols are tasteful and businesslike. Many businesses will choose to place these signs near entrances to the business, in employee lounge areas and on the bulletin boards where employee notices are posted.
- Only smoking inside “enclosed indoor areas” is prohibited. You may, if you wish, permit employees and visitors to smoke outside the building in a designated area including, immediately outside building entrances. However, you may prohibit smoking outside the building as well. This has always been your legal right and has nothing to do with Michigan’s new smoking ban law.
- If you believe that this is a good time to prohibit smoking outside your building by employees, you can make this a condition of their employment. You may also prohibit smoking by your employees any place on your premises altogether including, in employee’s cars in parking areas. You will however, need to inform your employees that they will no longer be able to smoke outside or in their cars. This notice to your employees can be given a few days before the date the new policy of no smoking on the premises begins and should be given in either a written memo or email to all employees. If you have an employee handbook, this change should be made in the handbook as well.
- Employees over age 18 are not legally entitled to “breaks” or “smoke breaks.” As an employer, you are not required to give employees age 18 or older a break to smoke (unless of course, you have a collective bargaining agreement that requires periodic breaks).
- If you decide to ban smoking on your premises and your employees are permitted to leave the premises for lunch, they can obviously choose to smoke on their lunch hour off the premises.
- If you lease space in a building, you should check with your landlord on what the landlord’s policy will be as it relates to smoking in common building areas and outside the building. Most leases permit the landlord to prescribe rules and regulations that all tenants are required to follow.

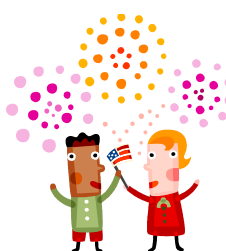
Under the new law, individual owners, operators and managers of public places like you, have the responsibility of enforcing the new non-smoking law and can be held civilly liable for not complying with the basic enforcement requirements of the new law. The failure on the part of an owner, operator or manager to make a good faith effort to prevent smoking in prohibited areas can result in a civil fine of up to \$100 for the first offense and up to \$500 for any and all subsequent offenses. Consequently, you must take steps to make sure that no one smokes inside your place of business. If a visitor smokes in your building, politely ask the visitor to stop smoking or go outside to smoke if smoking is permitted outside. In the unlikely event that an employee smokes inside having been told that smoking by employees is not permitted, the employee may be disciplined or terminated.

*Any questions or comments regarding this article may be addressed to **Mark Stasa** at **Kerr, Russell & Weber, PLC** (Attorney’s for the SMRCA/RIPF). Please note that you should also consult your attorney concerning the application of the law to your specific situation.*

### New Websites

Check out the new websites that have been created by the Roofers Union Local #149, Joint Apprenticeship Training School and the SMRCA.

Roofers Union Local #149	<a href="http://www.rooferslocal149mi.com">www.rooferslocal149mi.com</a>
SMRCA	<a href="http://www.smrca.org">www.smrca.org</a>
Joint Apprenticeship Training School	<a href="http://www.detroitrooferstraining.com">www.detroitrooferstraining.com</a> Coming Soon



### Dates to Remember

- June 20—Father’s Day
- July 4—Independence Day
- September 6—Labor Day

## Upcoming Seminars

If you are interested in any of the following seminars, call the SMRCA office at (586) 759-2140 for more information.

### NRCA Programs

#### Online Educational Programs

#### Roofing 101

Roofing 101 is an interactive online educational program addressing basic roofing terminology, roof assembly components and roof systems. This program consists of five self-paced learning modules requiring about one hour each to complete. Animation, graphics, videos and interactive learning activities combine to create a fun, effective learning experience.

#### Impact-resistant Roofs: Smart Steps to Reduce Hailstorm Damage

Impact-resistant Roofs: Smart Steps to Reduce Hailstorm Damage is a free, online learning experience that consists of four self-paced learning modules. It teaches homeowners and other consumers about the benefits of installing impact-resistant residential roofing products.

#### Impact-resistant Roofs: Contractor Certificate

A convenient online educational program that will help you and your employees better serve your customers by building basic competencies for identifying, selecting, installing and selling impact-resistant roofing products. This program requires you to complete in-depth technical training and pass a comprehensive exam before you are awarded an NRCA University Certificate of Completion. Once you have been awarded an NRCA University Certificate of Completion, you will be listed in NRCA's database of roofing professionals who have successfully completed the program. This database increases your business by allowing consumers and insurance claim adjuster to effectively search for quality roofing professionals.

#### Roofing, Energy and the Environment Series: Energy Efficiency in Roof Systems

Grow your company's business with new energy-efficient systems, installation methods and technological advances. You will learn the latest information concerning cool, vegetative and photovoltaic roof systems. In addition, you will review: how materials and the environment influenced the energy-efficient roofing industry, how market conditions, the global economy, and government regulations and incentives have influenced roofing and energy-efficient design options.

For more information, visit:  
<http://www.nrca.net/rp/education/nrca/onlinechedule.aspx>

### Records Retention and Destruction

July 27  
July 28  
July 29

Grand Rapids, MI  
Ann Arbor, MI  
Farmington Hills, MI

Gain valuable information for successfully organizing, storing, archiving, and destroying your organization's critical business documents. Eliminate risk and ensure compliance with the latest legal requirements.

- How to plan, develop, and implement a records retention program from the ground up
- The Records Retention Audit: an easy way to assess the entire content of your files
- Guidelines that help you identify the types of records, forms and documents you should maintain access to, archive, or destroy
- Why keeping records for too long can be as harmful as destroying them too soon
- Records management software: what works, what doesn't, and what's best for your organization
- Security methods for storing and accessing sensitive documents and information
- Best practices to ensure compliance with HIPAA, SEC, ISO, AICPA, and more
- How to deal with e-mail, Internet materials, and other electronic documents
- 3 ways to ensure full employee cooperation and compliance—at every level of your organization

This seminar features cutting-edge insight into the latest court rulings, regulatory requirements, and legal developments. Don't miss your chance to get up to date on trends, legislation, and laws relating to records management and retention.

For more information, visit:  
<http://events.pryor.com/245134>

### Green Websites

There are many excellent websites from which to get information about LEED, Green and Sustainable design and construction and general information about what's going on in the world of Green.

[www.aia.org/cote](http://www.aia.org/cote)  
[www.ashrae.org](http://www.ashrae.org)  
[www.bepinfo.com](http://www.bepinfo.com)  
[www.buildinggreen.com](http://www.buildinggreen.com)  
[www.cam-online.com](http://www.cam-online.com)  
[www.michigangreen.org](http://www.michigangreen.org)  
[www.tagosgreen.com](http://www.tagosgreen.com)  
[www.usgbc.org](http://www.usgbc.org)  
[www.wwj.com/GLITR](http://www.wwj.com/GLITR)

### CAMTEC

#### Lien Law / Payment Bonds

June 8

Bloomfield Hills, MI

Marty Burnstein will explain the step-by-step approach to protecting contractor, subcontractor and supplier payment rights on private work under the Michigan Construction Lien Act and on Public work under the Michigan Bonding Acct with an explanation of how to fill out all forms.

#### AIA Contracts

September 14

Bloomfield Hills, MI

This seminar instructs contractors and subcontractors on the use of AIA contracts, including design-build, construction management, and subcontract agreements. Special attention is paid to AIA A201, the most commonly used set of general conditions in the industry. Other topics include: contractual assignment of risk; owner, architect, contractor and subcontractor obligations; dispute resolution procedures; change orders; and key differences between the AIAs A201 and the new Consensus DOCs 200. This course is directed at those who negotiate and manage contracts, such as company owners, senior managers, and project managers.

#### Construction Contracts & Subcontracts

September 14

Bloomfield Hills, MI

Learn to review a contract with an owner, subcontractor or a general contractor, without being an attorney. Know how to check for key provisions. What is a 'pay when paid' clause? How will disputes and claims be handled? What can I negotiate? Know before you start the work.

#### OSHA 10-Hour

September 15 & 16

Bloomfield Hills, MI

This program is designed to provide participants with a basic understanding of the hazards present in most construction projects. Participants will be able to identify, and then avoid, reduce, or eliminate job hazards. In addition, they will become more familiar with required record keeping and MIOSHA enforcement procedures. Special emphasis is placed on those areas that are the most hazardous. Upon completion of the course, the student will receive an OSHA Construction Safety and Health 10-hour course completion card.

For more information on the above classes, registration information and additional classes, log on to: [www.cam-online.com](http://www.cam-online.com)